

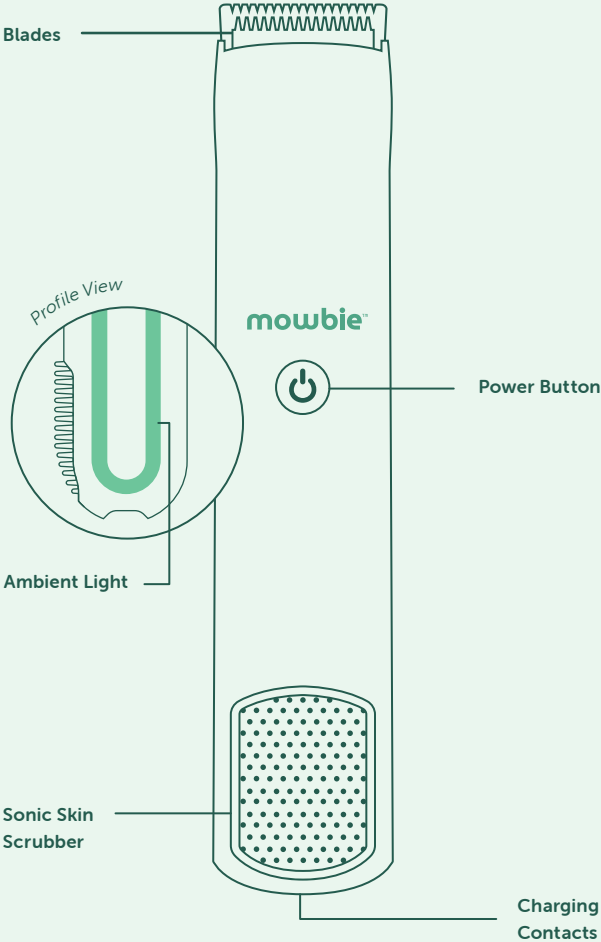


mowbie™

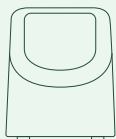


Beard Trimmer

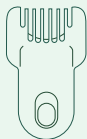
Product Overview



Accessories



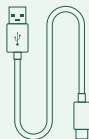
Charging Stand



Trimming
Guide



Cleaning
Brush

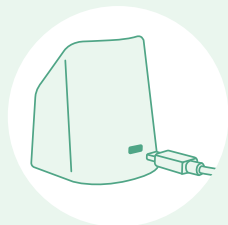


USB-C
Charging Cable

Warnings

- Do not expose to water when charging.
- This device is not a toy and is not intended for use by or on children.
- This device is intended for household use only.
- Do not use the device if it appears damaged, as injury may occur.
- Do not use on injured or damaged skin.
- Keep longer hair and clothing away from product during use.
- Do not share with others, this device is for personal use only.
- Stop use immediately if skin becomes irritated or inflamed.

How to Charge



The power button on the device will turn red and the ambient LEDs will dim to indicate that the battery is low. To charge the beard trimmer, plug the USB-C charging cord into the back of the charging stand. Use with a 5-volt USB wall adapter (standard mobile phone charger).

How to Charge (cont.)



Place the device in the charging stand so the charging contacts on the device line up with the contacts on the charging stand. When charging, the power button and the ambient LED lights on the side of the device will pulse. Once the device is fully charged, the LED lights will turn off.

A full charge will take 210 mins. and provide approximately 170 mins. of operation.

How to Use

1. Press the power button once to turn the device ON. The ambient LEDs will illuminate when the trimmer is on.
2. Move the trimmer slowly across the face to trim, edge, and style your facial hair.
3. To turn the silicone scrubber at the bottom of the device ON, press the power button again to switch to 'Cleansing' mode. Use with soap or face wash of your choice to cleanse your face or beard. Or use with beard oil to treat and moisturize your skin and beard. Move the scrubber along your skin and beard in circular motions.
4. Press the power button for the third time to turn the device OFF.

Trimming Guide

To adjust the built-in trimming guide, press the button on the guide and slide it up or down to the desired length (1-10mm). To remove the guide, press the button on the guide, slide it up and pull it off the device. To re-attach the guide, slide it back on to the trimmer head until it clicks into place.

Cleaning

1. Turn trimmer OFF before cleaning.
2. Remove trimming guide.
3. Clean trimmer and trimming guide by rinsing them under water and/or by using the cleaning brush.
4. Gently shake off excess water.
5. Set aside in a dry area and leave to air dry.

Warranty

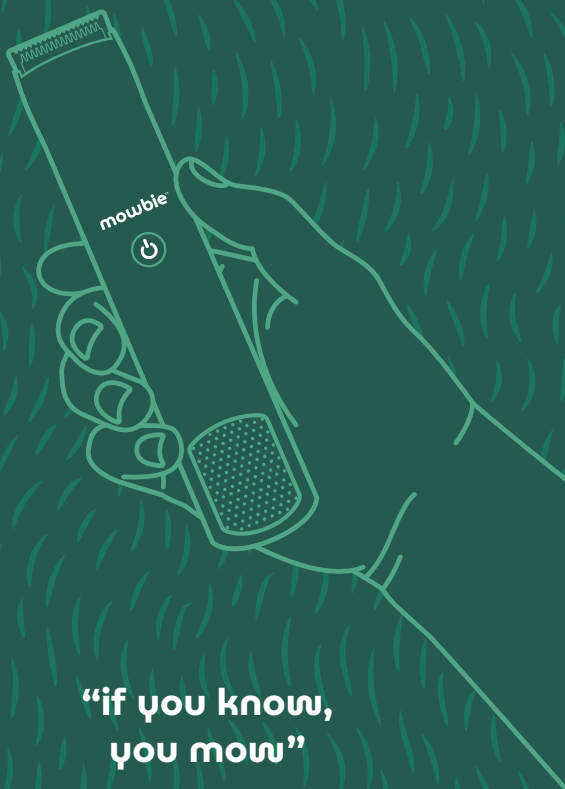
The mowbie™ beard trimmer carries a warranty against manufacturing defects (excluding cutting blades) for two years from the date of original purchase. mowbie will, at our option and upon submission of a valid proof of purchase within the warranty period, repair or replace the trimmer free of charge. For assistance or for issues related to performance, damages, blade replacement, warranty, regular maintenance or customer feedback, please contact mowbie Toll Free at (800) 514-2546 (except in Massachusetts) or in Massachusetts at (781) 449-9500 - press zero for an operator and request assistance or visit mowbie.com, Monday - Friday from 8:30AM until 5:30PM EST.



Enjoy Your Trim!

More questions? Visit mowbie.com/support

iykym



“if you know,
you mow”